



Luxurious family home, set over three floors

Extensive lounge, plus sunroom

Four well presented spacious double bedrooms

Family bathroom, plus two ensembles

On the edge of the National Park

Built by the well respected Nigel Kay Homes

Large, open plan kitchen diner

Master bedroom boasts a walk in wardrobe

Enjoys a rural feel, but close to numerous towns

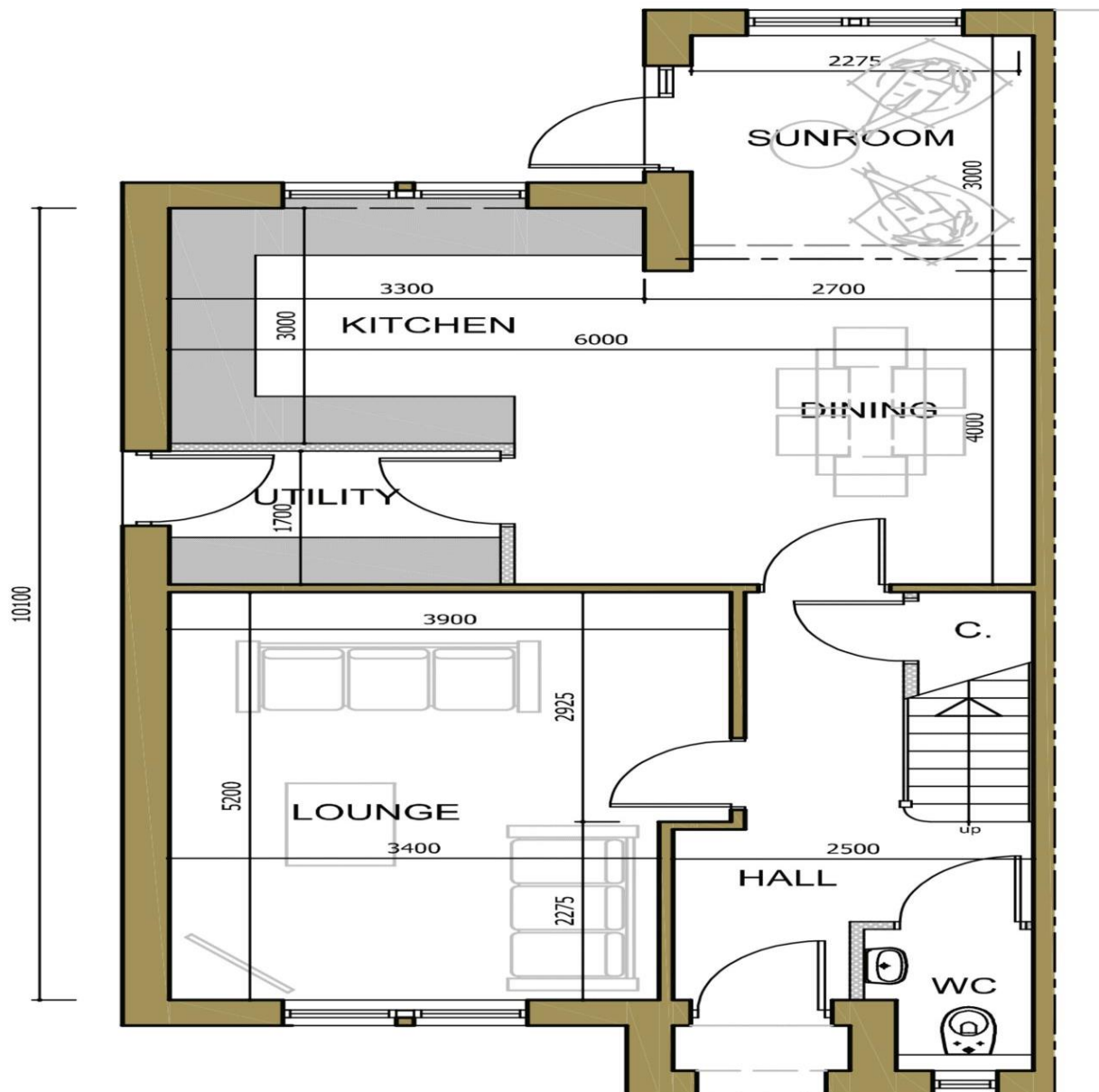
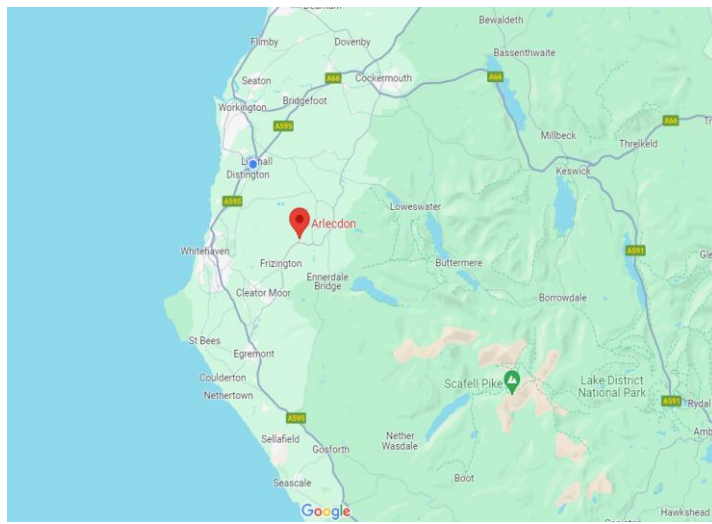
Picturesque village location

Welcome to The Croft, Farm Cottage is a stunning and luxurious home set over three spacious floors. This small and rather exclusive development known as The Croft is being built by the highly respected developer Nigel Kay, known for quality and attention to detail. These properties really are something rather special.

The property will certainly have kerb appeal with its sash windows and blended facing bricks. Within the property, there will be a tremendous amount of space with all the modern facilities you would expect. On the ground floor the property has a stunning open plan kitchen and diner which opens up to a beautiful family room, and the ground floor boasts a separate utility room. The impressive hallway leads through to the lounge with its large window, and a handy downstairs WC. Heading up to the first floor, the spacious landing leads to the large master bedroom which boasts a luxurious ensuite, and a large walk in wardrobe. On this floor, you'll also find another, spacious double bedroom, with a walk in wardrobe, as well as a large, storage cupboard and the stunning family bathroom. Continuing up to the second floor, you will find two more spacious double bedrooms, a large, storage cupboard and a shower room.

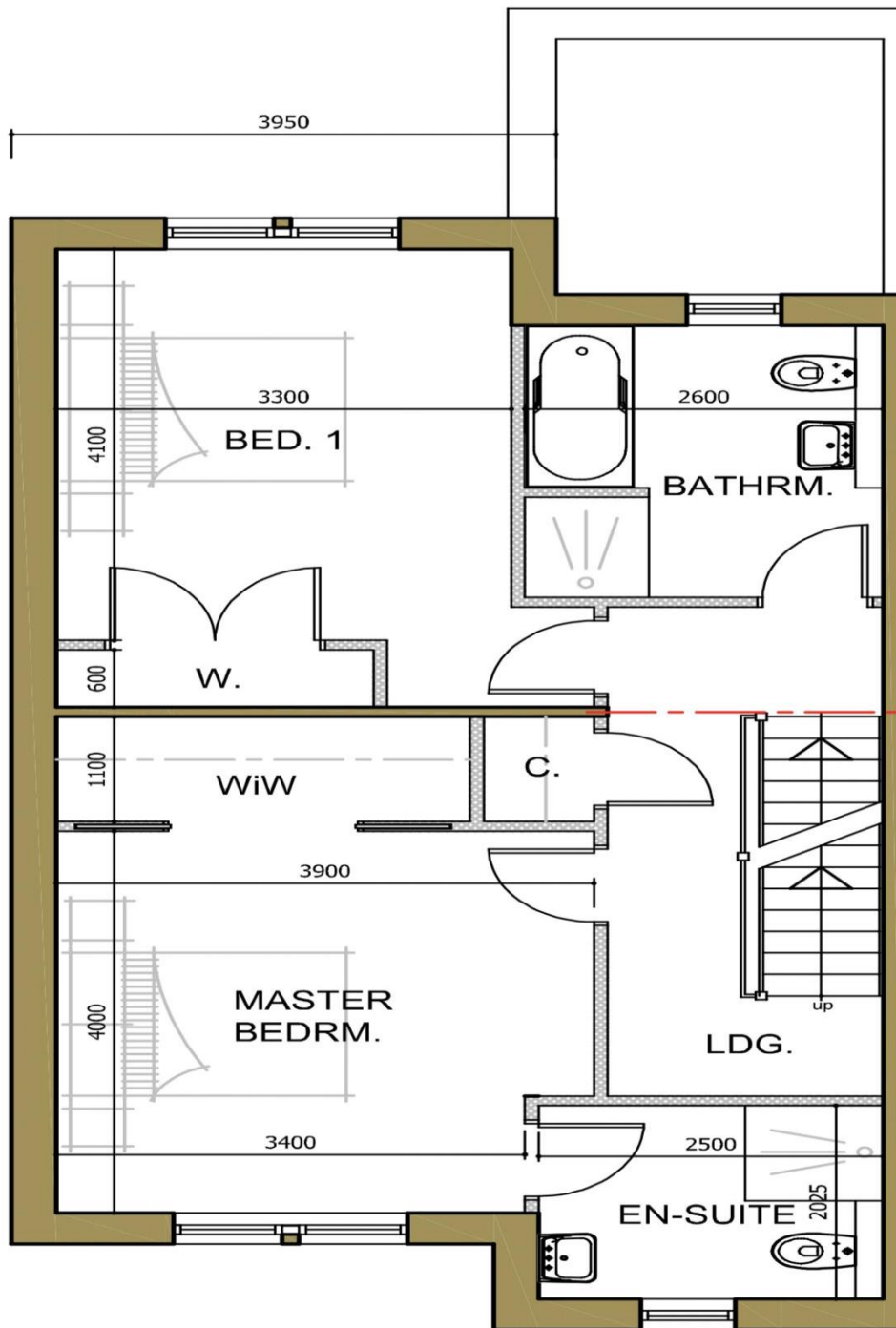
This lovely development is set in the picturesque village of Arlecdon, nestled on the edge of the Lake District National Park. The property will be a fantastic place from which to explore the quieter, less commercialised western lakes and surrounding Fells with Ennerdale water being just a 10 to 15 minute drive away. The fabulous Cumbrian coastline is also within easy reach with numerous beaches including the long sandy beach of St Bees within a 20 minute drive. Whilst the property enjoys a rural feel, with its village location, the nearby towns are within easy reach. The town of Cockermouth can be reached in 20 minutes, Egremont, Whitehaven and Workington not be reached in around a 10 minute drive. To find out more about this luxurious family home and its idyllic setting please contact the office on (01946) 413001 for further information.





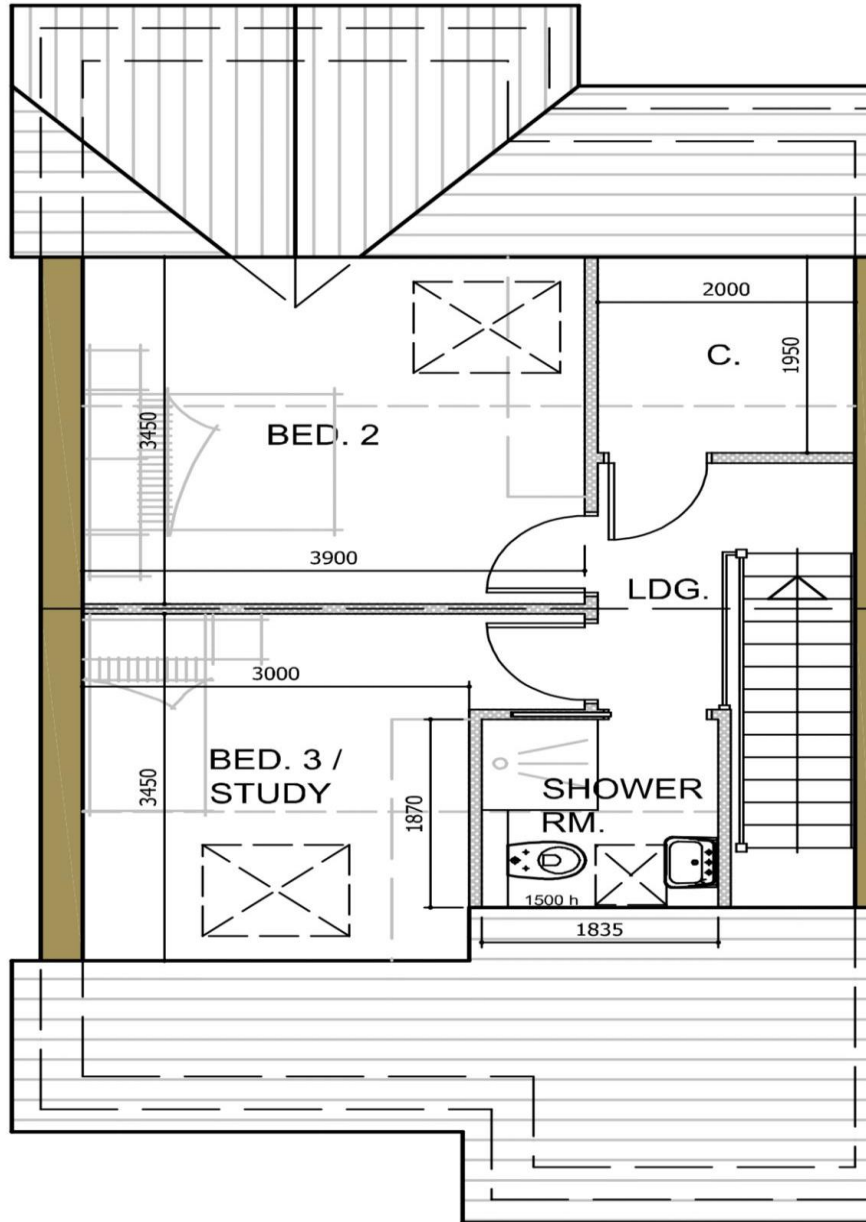
GF PLAN

66.42m² G.I.A.
excl. open porch.



FF PLAN

60.69m² G.I.A



SF PLAN

40.41m² G.I.A